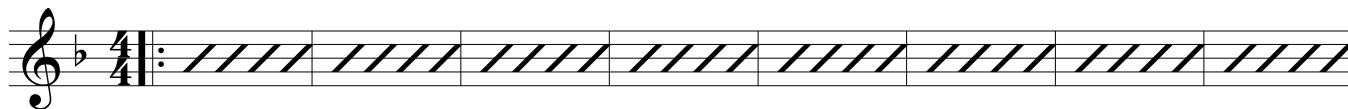


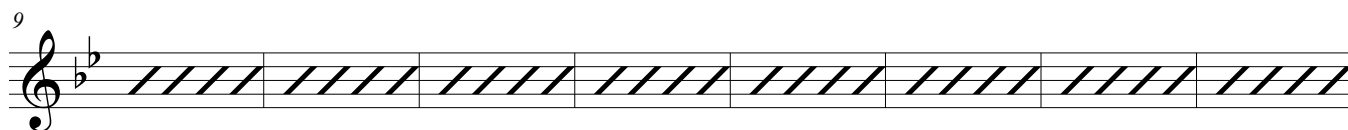
# Dominant 7 Chord Workout

C Instruments

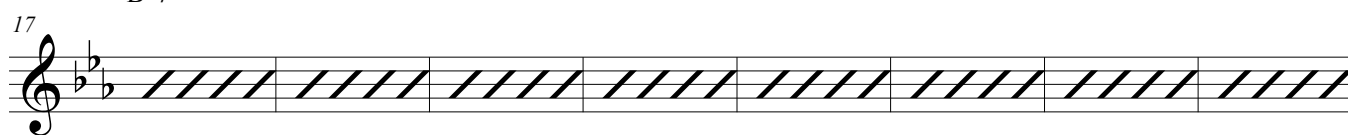
C7



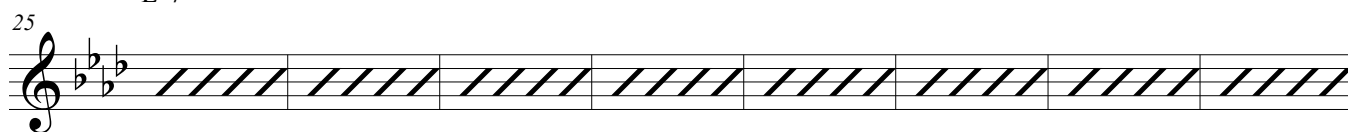
F7



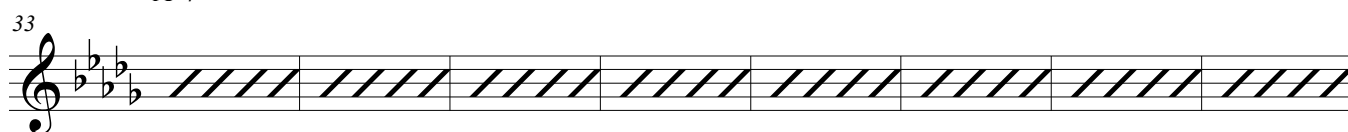
Bb7



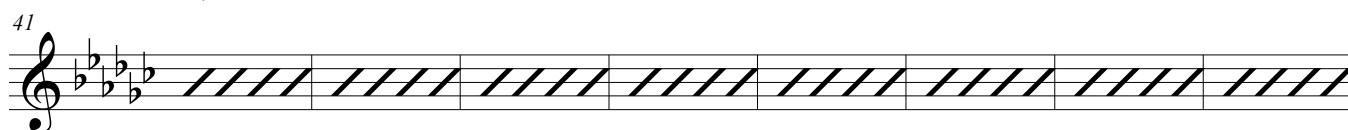
Eb7



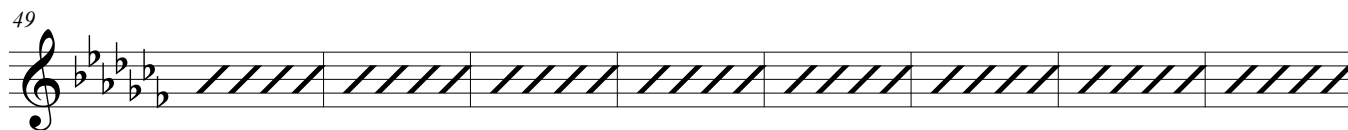
Ab7



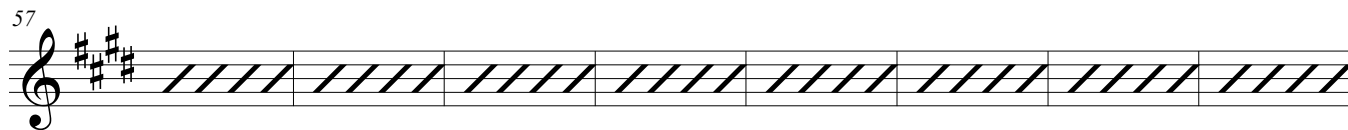
Db7



Gb7



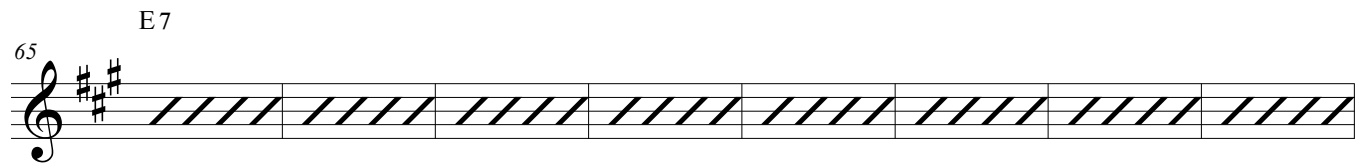
B7



2

E7

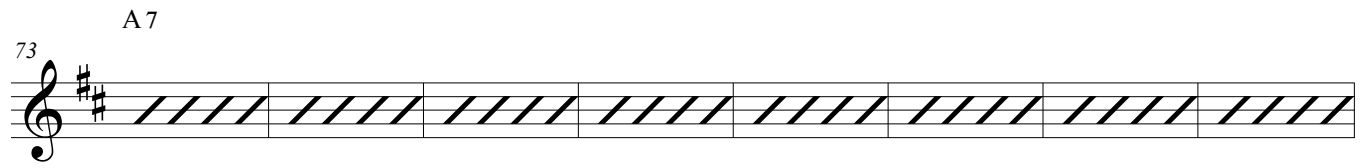
65



A musical staff in treble clef with a key signature of two sharps (F# and C#). The staff contains eight measures of music, each filled with diagonal hatching. The chord E7 is indicated above the staff.

A7

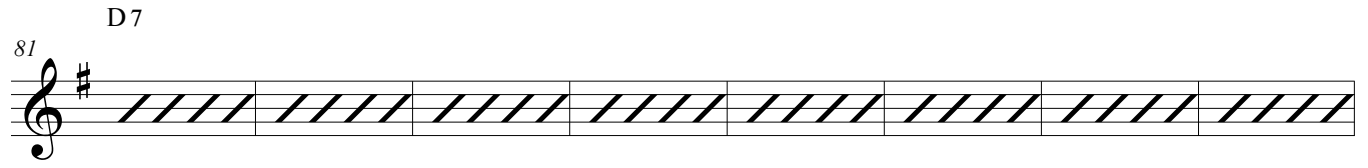
73



A musical staff in treble clef with a key signature of two sharps (F# and C#). The staff contains eight measures of music, each filled with diagonal hatching. The chord A7 is indicated above the staff.

D7

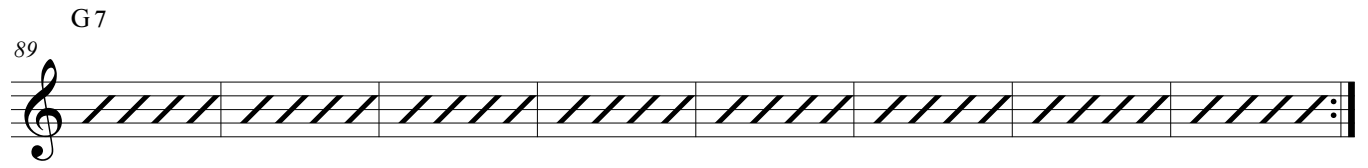
81



A musical staff in treble clef with a key signature of two sharps (F# and C#). The staff contains eight measures of music, each filled with diagonal hatching. The chord D7 is indicated above the staff.

G7

89



A musical staff in treble clef with a key signature of two sharps (F# and C#). The staff contains eight measures of music, each filled with diagonal hatching. The chord G7 is indicated above the staff. The piece concludes with a double bar line and repeat dots.