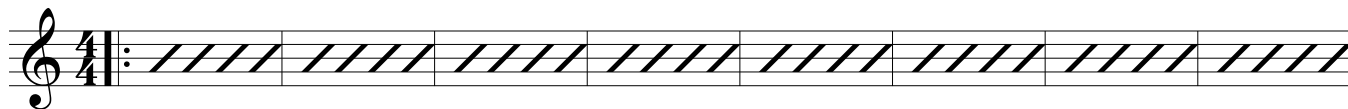


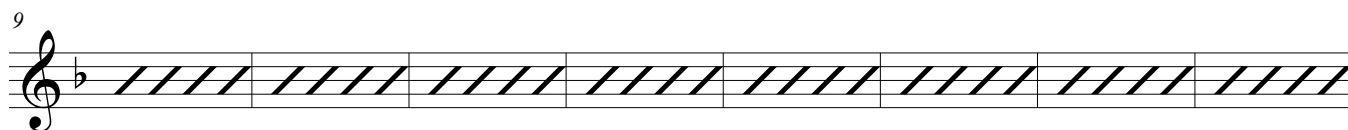
Minor 7 Chord Workout

E♭ Instruments

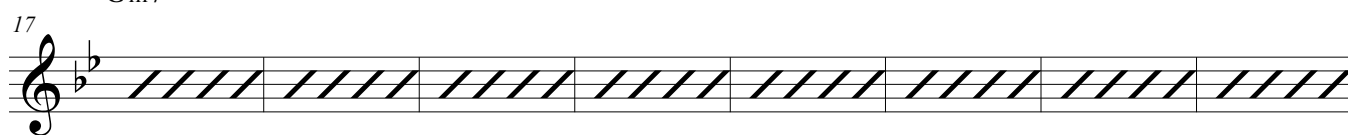
A m7



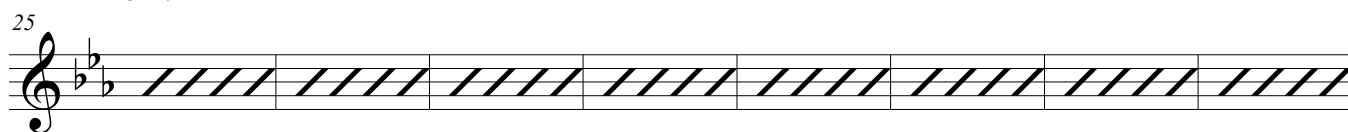
Dm7



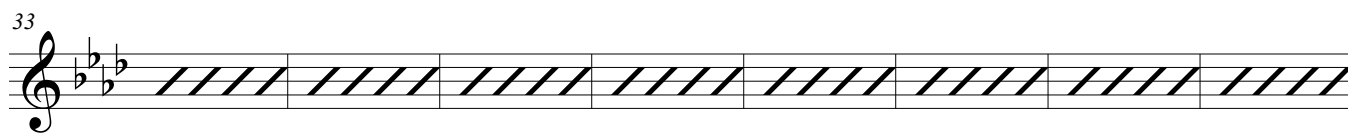
G m7



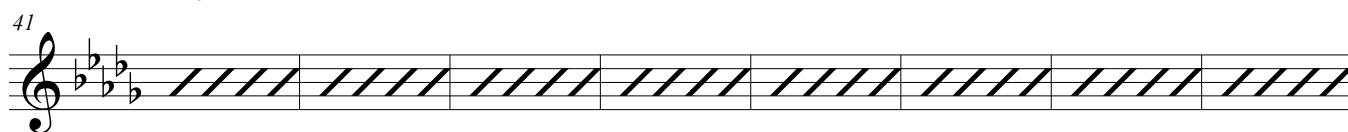
C m7



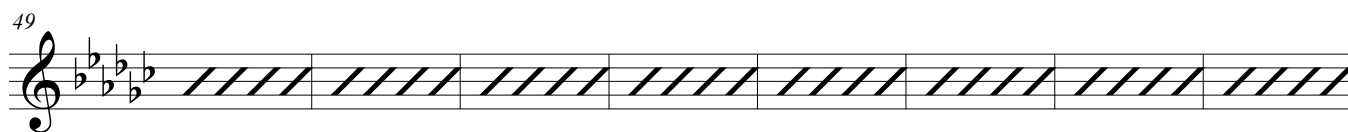
F m7



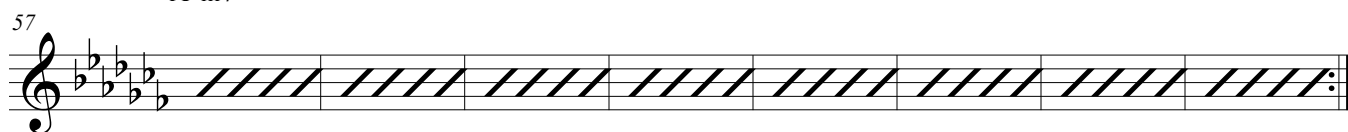
B♭m7



E♭m7



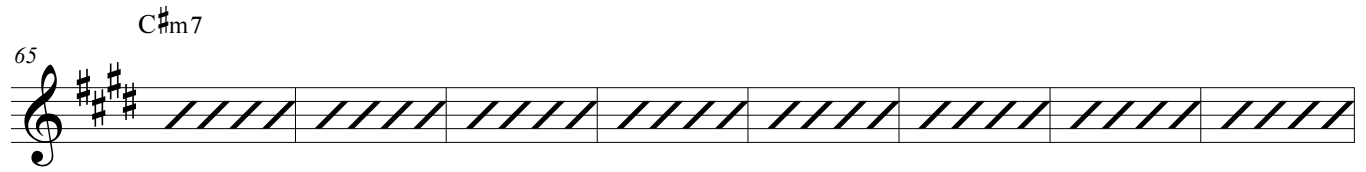
A♭m7



2

C#m7

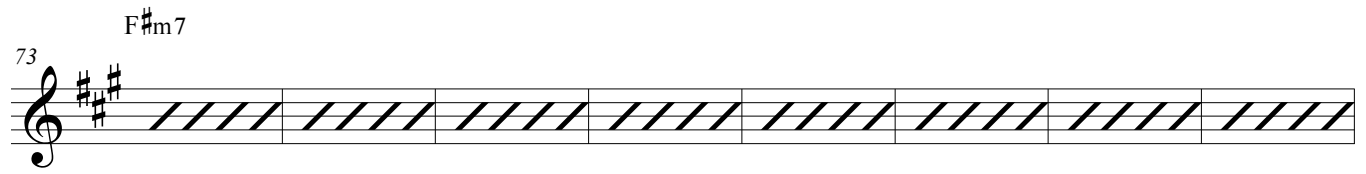
65



A musical staff in treble clef with a key signature of three sharps (F#, C#, G#). The staff contains eight measures of music, each filled with diagonal hatching. The chord symbol C#m7 is positioned above the first measure, and the measure number 65 is to the left of the first measure.

F#m7

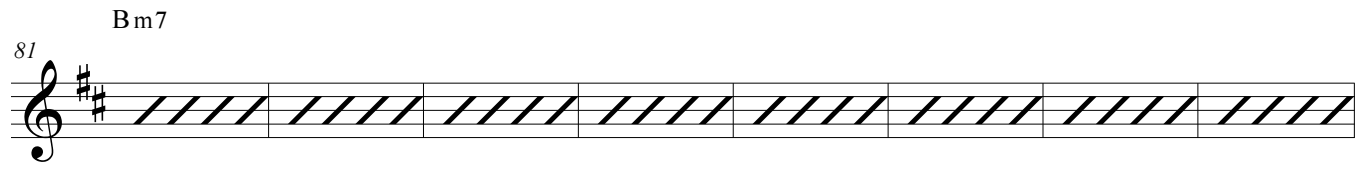
73



A musical staff in treble clef with a key signature of three sharps (F#, C#, G#). The staff contains eight measures of music, each filled with diagonal hatching. The chord symbol F#m7 is positioned above the first measure, and the measure number 73 is to the left of the first measure.

Bm7

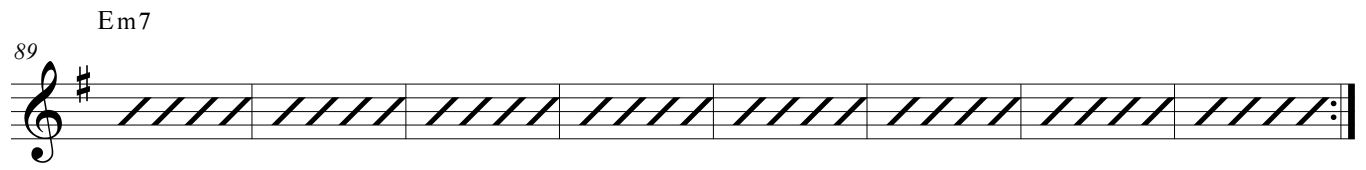
81



A musical staff in treble clef with a key signature of two sharps (F#, C#). The staff contains eight measures of music, each filled with diagonal hatching. The chord symbol Bm7 is positioned above the first measure, and the measure number 81 is to the left of the first measure.

Em7

89



A musical staff in treble clef with a key signature of one sharp (F#). The staff contains eight measures of music, each filled with diagonal hatching. The chord symbol Em7 is positioned above the first measure, and the measure number 89 is to the left of the first measure. The staff ends with a double bar line and repeat dots.